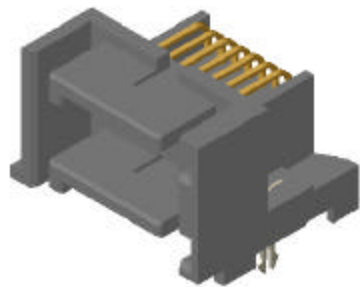
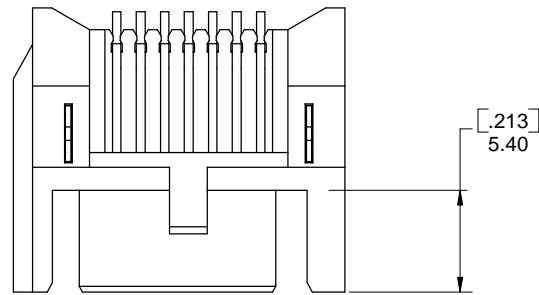


PART NO. CA-D14SAHPR-X-0-X

REVISIONS			
LTR	DESCRIPTION	DATE	APPROVED
A	INITIAL RELEASE SEE DO 5339	CP 11-25-03	A.J.



ORDERING NOMENCLATURE :

CA - D14SAHPR-X-0-X

DUAL STACK

NUMBER OF CONTACT POSITION

SERIAL ATA HOST PLUG
RIGHT ANGLE

PLATING

- A = CONTACT AREA : GOLD FLASH
- C = CONTACT AREA : .000015 [.00038] GOLD
- D = CONTACT AREA : .000005 [.00013] GOLD
- F = CONTACT AREA : .000030 [.00076] GOLD

- ALL WITH :
- SOLDER TAIL AREA : .000150 [.00381] 90/10 TIN/LEAD ALLOY
 - UNDERPLATE : .000075 [.00191] NICKEL

MOUNTING STYLE

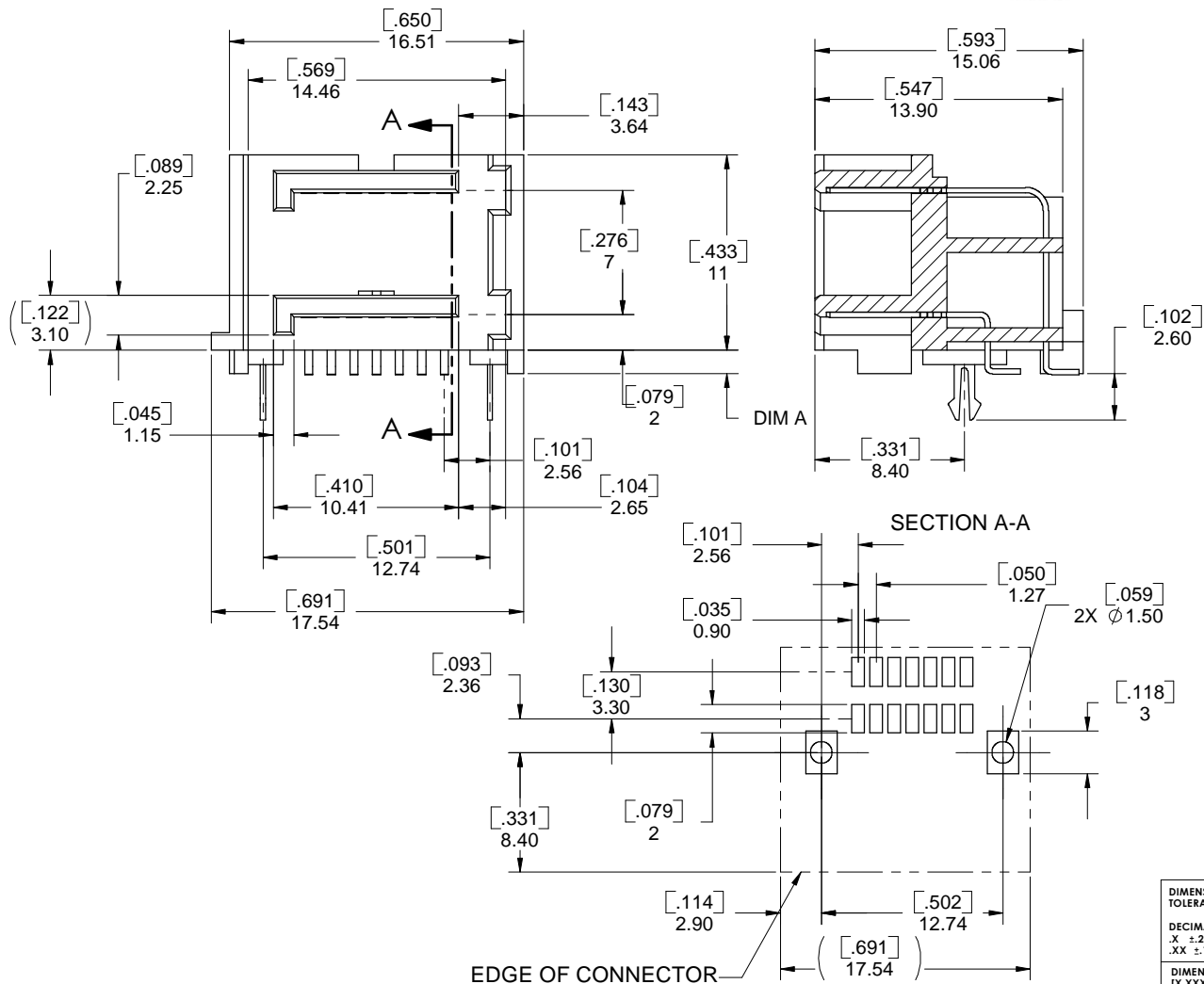
- 0 = SURFACE MOUNTING (SMT)

PROFILE

- 1 = 1.3mm (DIM A) STAND-OFF
- 2 = 0.8mm (DIM A) STAND-OFF
- 3 = NO STAND-OFF

SPECIFICATIONS:

- MECHANICAL**
- UNMATING FORCE : 15g MIN. PER CONTACT
 - DURABILITY: 500 CYCLES MINIMUM
 - CONTACT MATERIAL: BASS
 - INSULATOR MATERIAL: HIGH TEMPERATURE THERMOPLASTIC BLACK, UL94V-0
 - CLIP MATERIAL : BRASS
 - CONTACT PLATING: SEE ORDERING NOMENCLATURE
 - CLIP PLATING : 0.0038 [150uin] TIN/LEAD OVER 0.0013 [50uin] NICKEL
- ENVIRONMENTAL**
- TEMPERATURE RANGE : -40°C TO 105°C
- ELECTRICAL**
- VOLTAGE RATING : 30V DC MAX.
 - DIELECTRIC WITHSTANDING VOLTAGE : 500V DC FOR 1 MIN
 - INSULATOR RESISTANCE : >1000 MEGOHMS @ 250 Vrms
 - CONTACT RESISTANCE : <35 MILLIOHMS
 - CURRENT RATING : <15 MILLIOHMS CHANGE AFTER INITIAL CYCLE 2 AMPS



DIMENSIONS ARE IN MM TOLERANCES ARE:		APPROVALS	DATE
DECIMALS	ANGLES	DRAWN CUONG P.	11-25-03
.X ±.25	±1°	CHECKED A. JOCHEN	11-25-03
.XX ±.010	±1°	THE INFORMATION AND DESIGN DISCLOSED HEREIN WAS ORIGINATED BY AND IS THE PROPERTY OF CIRCUIT ASSEMBLY CORPORATION. CIRCUIT ASSEMBLY CORPORATION RESERVES ALL PATENT, PROPRIETARY, DESIGN, MANUFACTURING, REPRODUCTION, USE AND SALES RIGHTS THERE TO, AND TO ANY ARTICLE DISCLOSED HEREIN EXCEPT TO THE EXTENT RIGHTS ARE EXPRESSLY GRANTED TO OTHERS. THE FOREGOING DOES NOT APPLY TO VENDOR PROPRIETARY RIGHTS.	
.XXX ± 0.006	±1°	DO NOT SCALE DRAWING	

CIRCUIT ASSEMBLY CORP.
18 THOMAS ST., IRVINE, CALIFORNIA 92618-2777

CONNECTOR ASSEMBLY - DUAL STACK
SERIES SAHPR
SERIAL ATA PLUG, RT. ANGLE, SMT

SIZE	CODE IDENT NO.	DRAWING NO.	REV.
C	52072	620464	A

SCALE: 5:1 SHEET 1 OF 1