

P/N 22SAHS-X-1-1-X-X

REV.	DESCRIPTION	ECN.	APPD.
A	NEW		ROBBIE
B	ADD OPTION	E030826H036	ROBBIE
C	ADD OPTION	E031030H181	ROBBIE
D	DESIGN CHANGE	E040203H366	ROBBIE

ORDERING NOMENCLATURE : 22SAHS-X-1-1-X-X

NUMBER OF CONTACT POS
SERIAL ATA
HOST SOCKET

PLATING: A: 1u"; B: 3u"; C: 15u"; D: 5u"; F: 30u"

HEIGHT: 1=REGULAR;

CONTACT:

- 0= SURFACE MOUNT(post=3.7*2.24mm and 3.7*2.54mm);
- 1= THRU HOLE(TWO ROW)
- 2= THRU HOLE (REV) (TWO ROW)
- 3= PRESS FIT; 4= MOLD WITH COVER
- 5= MOLDING TYPE WITHOUT COVER(L=40.44mm)
- 6= MOLDING TYPE WITHOUT COVER(L=52.20mm)
- 7= THRU HOLE(ONE ROW)
- 8= PRESS FIT (REV LAYOUT);
- 9= SURFACE MOUNT(Both Post=1.0*2.24mm);
- 10= SURFACE MOUNT(Both Post=3.7*2.24mm);

MARK: 1=HAVE THREE LOCK TABS

2=NOT HAVE THREE LOCK TABS

MARK: 1=HAVE "CA" MARK

2=NOT HAVE "CA" MARK

NOTES:

1.MATERIAL :

HOUSING : HIGHT TEMPERATURE THERMOPLASTIC (LCP) G.F.30%, UL94V-0, COLOR : BLACK
TERMINAL: PHOSPHOR BRONZE,C5210
THICKNESS = 0.30±0.01 mm

2.TERMINAL PLATING :

CONTACT AREA :AU PLATED AT CONTACT AREA
PLATED ALL OVER : TIN-LEAD(Sn-Pb)ALLOY,
150 u" MINIMUM UNDER PLATE : NICKEL (NI),
50 u" MINIMUM

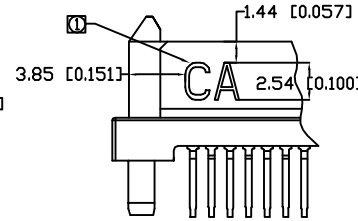
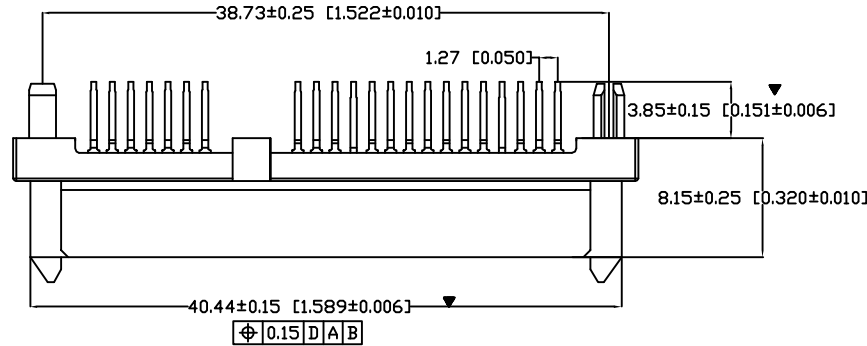
4.PRODUCT SPECIFICATION : REFER H100002

5. THE MARK CAN OPTION

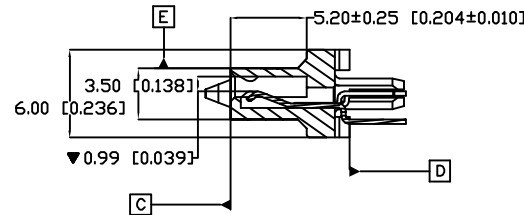
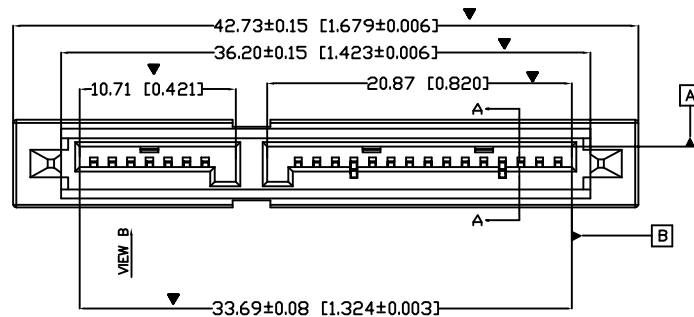
6.OTHER DIMENSION TOLERANCE IS 0.05mm

7.MARK ▼ DIMENSION MUST CONTROL

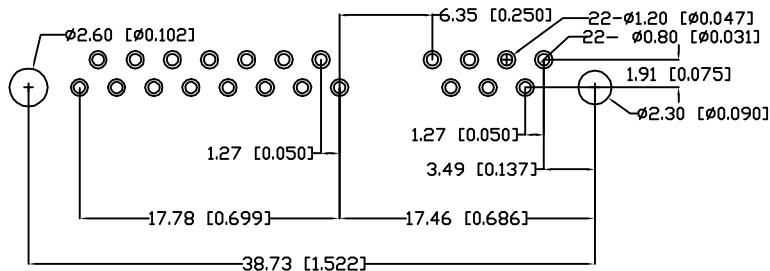
8.ALL DIMENSION MEASURE BY FAI



VIEW B



SECTION A-A



RECOMMENDED P.C. BOARD LAYOUT COMPONENT SIDE SHOWN

MILLIMETERS	INCH	UNITS	MM	NAME(INTENDED USE)	CIRCUIT ASSEMBLY SHENZHEN CA INDUSTRIAL BUILDING, AOXING ROAD, ADEBI SECOND VILLAGE, HENGANG TOWN, SHENZHEN CITY, GUANGDONG,PROVINCE,CHINA
X° ± 2°	X° ± 2°	MAT'L		PART NO.(INTENDED USE)	
.X ± 0.25	.X ± .010			22SAHS-X-1-1-X-X	SATA 22P SOCKET THROUGH HOLE TYPE ASSEMBLY FOR CUSTOMER
.XX ± 0.13	.XX ± .005	FINISH		APPD: Robbie 02/04/04'	DWG NO.:
.XXX ± ----	.XXX ± ----			CHKD: Robbie 02/04/04'	H610288
THESE DRAWINGS AND SPECIFICATIONS ARE THE PROPERTY OF CIRCUIT ASSEMBLY SHEN ZHEN AND SHALL NOT BE REPRODUCED, COPIED OR USED IN ANY MANNER WITHOUT THE PRIOR WRITTEN CONSENT OF CIRCUIT ASSEMBLY SHEN ZHEN				Q'TY	DR: RAY 02/03/04'
				SCALE	SHEET
				1/1	1/1
				REV.	D